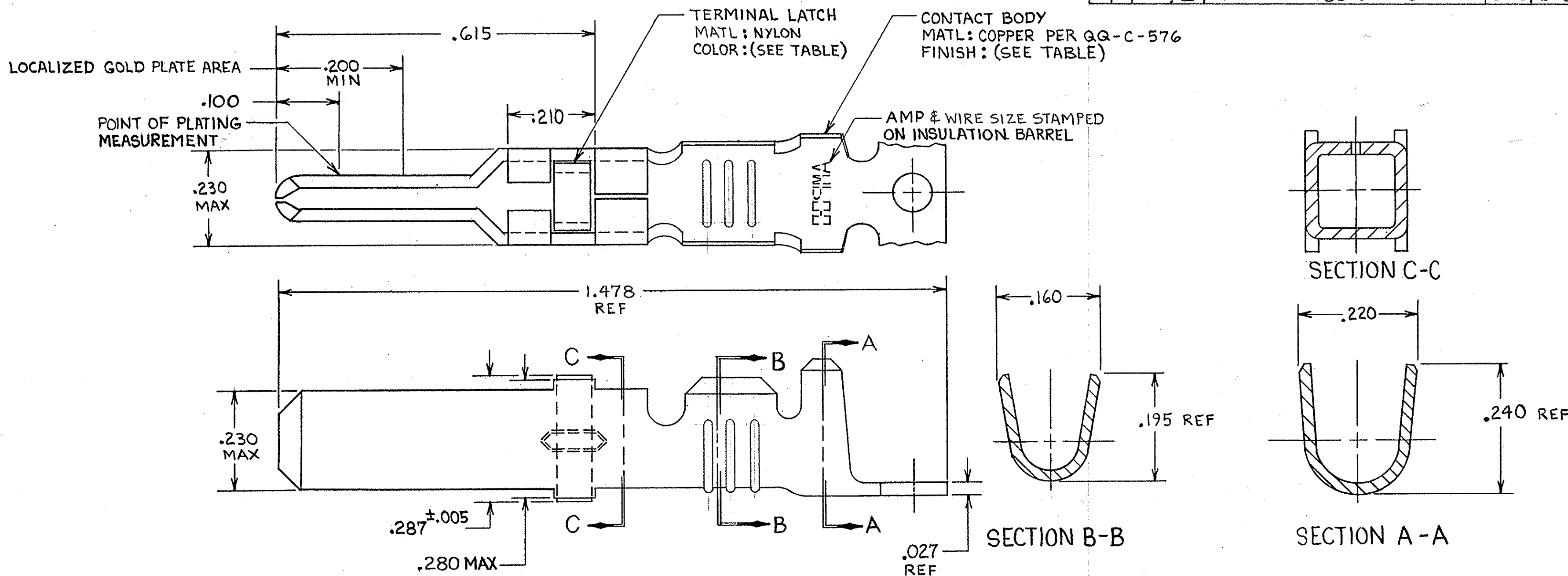


THIS DRAWING IS UNPUBLISHED. RELEASED FOR PUBLICATION  
 © COPYRIGHT 19 BY AMP INCORPORATED, HARRISBURG, PA. ALL INTERNATIONAL RIGHTS RESERVED. AMP PRODUCTS MAY BE COVERED BY U.S. AND FOREIGN PATENTS AND/OR PATENTS PENDING.

REVISIONS					
P	F	ZONE	LTR	DESCRIPTION	DATE APPROVED
✓			V	REDRAWN & REVISED PER ECN R-1451	9-30-85
✓			W	OBSOLETE -3 & -4 PER R-2760	3-4-87
✓			Y	ADD -9 AND -10 PER NPR 3264-94	12-19-94
			Z	REV PER OG30-269-03	5-03



- ① REELED FOR USE WITH STANDARD APPLICATORS.
- ② REELED FOR USE WITH HEAVY DUTY MINI-APPLICATORS.
- ③ PLATED WITH .000100 MIN SILVER PER Q.Q.-S-365.
- ④ PLATED WITH .000015 MIN GOLD PER MIL-G-45204 IN THE LOCALIZED GOLD PLATE AREA, GOLD FLASH ON THE REMAINDER, OVER .000030 MIN NICKEL PER Q.Q.-N-290.
- ⑤ PLATED WITH .000030 MIN GOLD PER MIL-G-45204 IN THE LOCALIZED GOLD PLATE AREA, GOLD FLASH ON THE REMAINDER, OVER .000030 MIN NICKEL PER Q.Q.-N-290.
- ⑥ PLATED WITH .000050 MIN 93-7% TIN-LEAD ALLOY OVER .000030 MIN NICKEL PER Q.Q.-N-290.
- 7. WIRE RANGE = 12-16 AWG.
- 8. INSULATION RANGE = .140-.165 DIA.
- ⑨ PLATED TIN (NO LEAD) .000050 MIN THK PER ASTM-B-545 OVER NICKEL .000030 MIN THK PER Q.Q.-N-290

BLACK	⑨	66261-5	1-66255-2/2
BLACK	⑨	66261-5	1-66255-1
NATURAL	NONE		1-66255-0
NATURAL	NONE		66255-9
NATURAL	③	66261-4	66255-8
NATURAL	③	66261-4	66255-7
BLACK	⑤	66261-2	66255-6
BLACK	⑥	66261-1	66255-5
BLACK	④	<del>OBSOLETE</del>	66255-4
BLACK	④	<del>OBSOLETE</del>	66255-3
BLACK	⑤	66261-2	66255-2
BLACK	⑥	66261-1	66255-1
TERMINAL LATCH COLOR	FINISH	L.P. ASSY P/N REF	STRIP ASSY P/N

UNLESS OTHERWISE SPECIFIED DIMENSIONS ARE IN INCHES. TOLERANCES ON: DECIMALS ±.010 ANGLES ±	CONTRACT NO		AMP   AMP INCORPORATED Harrisburg, Pa. 17105	
	DR <i>Rick Rohrbach</i> 9-27-85	NAME		
MATERIAL SEE CALLOUT	CHG <i>Larry L. Lawver</i> 10-1-85	MALE TYPE XII CONTACT STRIP ASSEMBLY		
FINISH SEE DASH NO	APPD <i>B.L. Boland</i> 10-1-85	SIZE <b>C</b>	FSCM NO <b>00779</b>	DRAWING NO <b>66255</b>
	APPD <i>Alvin E. Smith</i> 10-5-85	SCALE NTS	SHEET	
	DSGN APPD	CUSTOMER DRAWING		
	OTHER APPD			